



# CNH | KEY CLUB

September 2016

Volume 8 | Issue 4



## The Official CNH District Newsletter



***Please BEE Green! Do not print this newsletter!***

## in this **ISSUE** september 2016

A Word from the News Editor .....	2
Executive Messages.....	3
International Update.....	4
College Exop Updates.....	5
Communication and Marketing Updates.....	8
Effectively Planning for DCON.....	11
Cybercorner.....	14
Region Training Conference Information .....	15
KeyLeader Updates.....	16
Member Recognition Updates .....	19
Policy, international Business, & Elections Updates.....	21
Meet the International Trustee .....	25
Spotlight on Service .....	26
Fundraising for Fall Rally .....	27
About Pediatric Trauma Program.....	28
Division Recognition.....	32
District Calendar.....	36
Contact Information.....	39
Thank You.....	40

## A word from the **NEWS EDITOR**



Hello, CNH Bees!

Happy September busy bees! School, sadly, has started and the sleepless nights has began. Not because of late night conversations or movie marathons, but because of homework and studying. Set your alarms, and go to sleep early, if possible. Don't forget to eat a healthy breakfast every morning, its the most important meal of the day. Even if you are in a rush, grab a fruit or a granola bar. You need that energy for class!

School starting means, club rush and key club meetings. Hope you have all planned for club rush, and are ready to recruit new members! Start planning for your first club meeting as well, that is the most important and biggest one. Have a little snack or some ice breakers to engage with the members. Don't forget to promote and mark your calendars for Region Training Conference, and Fall Rally because that is right around the corner! It will be here sooner than you'll know it!

Hope you all had or will have an amazing first day of school! Study hard, pay attention, and have an amazing school year CNH Bees! Keep Shining!

Shining with Service,  
**Teryn Ngo**  
District News Editor



# Executive Messages

## Governor



Contributions  
from your  
'16-'17 Executive  
"Bee Team"

Greetings CNH Bees!

Are you happy to be back in school? Have you attended a Key Club meeting? Better yet, did you convince some of your friends to join too? Even better yet, did you pay your dues? I sincerely hope the answer to be a "YES!" to the majority of these questions.

Balance is essential as our lives will begin to become busier and busier into the school year. Remember to keep a commitment to Key Club still on your priority list. As weekends become valuable days to rest, sleep-in and lounge around, remember to make time for Key Club.

Have no fear if you're looking for exciting event; all you need to do is look ahead! Soon enough Region Training Conference (RTC), Fall Rally, and other various holidays will be upon us. It's critical to look out for info from your respective Lt. Governor, the CyberKey ([cnhkeyclub.org](http://cnhkeyclub.org)), and from your respective club officers on these upcoming

events. At RTC, you'll get to meet Key Clubbers across the region for a day of training, fellowship and attainment of new skills for you to utilize. Quickly following that will be Fall Rally where Key Clubbers attend rallies to raise awareness for Pediatric Trauma Program through fundraising, showcase impressive spirit, and create a memorable day of fun. These events are only a part of your journey through Key Club as the real impact comes from you serving your community. These events will further propel and inspire you to do just that.

The first step in all of this, is make sure you are dues paid! Help your club achieve on-time submission of dues by ensuring they're submitted to International before November 1st.

Thank you Bees. I appreciate your hard work, diligence and continual service. Keep on shining!



**Kevin Myron**  
District Governor

## Secretary

Hello, CNH Bees!

School is now in session for many of us, so that means that school work will begin to pile up. That being said, it is really important for you to time manage so that we can have enough time for both our extracurriculars and school work. Above all, make sure that you are saving time for yourself and for your family. It is sometimes easy to get lost in the work we have to do and lose the focus on ourselves and our family, so make sure that even during the most stressful of times during school, have some space for yourself and spend time with those that you love.

Seeing that is the beginning of the school year, start preparing for club rush by making posters and creating sign up sheets. A great resource is to have those sign up sheets be digital (on someone's laptop) so that it is easier to read new members' contact information. It is never too early to begin, so start posting flyers up and spreading the word so that recruitment can be well on its way!

For seniors, I completely relate to many of you that have busy schedules especially with the added weight of college applications. However, make sure that the stress doesn't overwhelm you so get started with the personal statements and application process! Deadlines are approaching, so make sure that you are not only doing work on your part for yourself, but so that the rest of the club officers or members that look up to you can see you as a role model.

As always, feel free to contact me with any questions or just to chat!

In Dedicated Service,

**Angel Lau**  
District Secretary

# Executive Messages

## Treasurer



Contributions  
from your  
'16-'17 Executive  
"Bee Team"

Hello CNH Bees!

School is back in session! For most of us, this means going back to spending days in the library and getting back into the flow of balancing school with other activities. One thing I would love for everyone to focus on for this new school year is growth!

The CNH District of Key Club is truly astounding in size; however, this does not mean we can not get even bigger! Remember, more members mean that more people will have a chance to make our homes, schools, and communities better places. One of our district goals is to gain three new members per club beyond retention. With the school year underway, strive to gain not just three new members, but even more! Go crazy, recruit the whole school! This can be done by being creative and creating a positive atmosphere about Key Club around school. Effective publication and communication is the key to successful growth!

But remember, growth is not just confined to Key Club. But consider this year as yours to grow as a person, friend, and a servant leader. Set goals and aim to achieve them! I BEElieve in all of you!

Club officers! With September finally here, the Membership Update Center will finally be open on September 6th to start recording new members for the 2016-17 term. Be sure to see if you have access to the MUC as soon as possible in case there are issues. Also, be sure to emphasize dues payment throughout your first meetings! You can all start paying dues once October 1st comes around. Remember, if you pay before November 1st, your club will be recognized as an Early Bird club by Key Club International!

I wish you all a great school and rest of Key Club year!

**Sharukh Shaikh**  
District Treasurer

## Message from the Trustee



Hello CNH Bees!

My name is William Zhang, your international trustee! I hail from the snowy Eastern Canada District, where I served as a club co-president and lieutenant governor. A little about me: I am a senior in the IB Program, I love to read, create art, and have boba with my friends to cool down (not that the snow doesn't make it cold enough).

What a phenomenal experience it is to be able to see you, a member of the largest Key Club district, performing golden service! It is an absolute honor to serve the West Virginia, California-Nevada-Hawaii, and Jamaica Districts of Key Club International. Throughout the year, I work closely with the CNH District Board, and represent the district at International Board meetings.

A great way to be connected is through lieutenant governors! They will be able to share with you my international newsletters. That said, bee on the lookout for Region Training Conference notices! RTCs are a great opportunity to communicate with the district board, meet Key Clubbers within the region, and show off your spirit.

As you start off yet another school year, I wish you the best of luck, and not to stress too much! Make time for the things you love, a golden year lies just ahead.

**William Zhang**  
International Trustee

# WRITING PERSONAL STATEMENTS

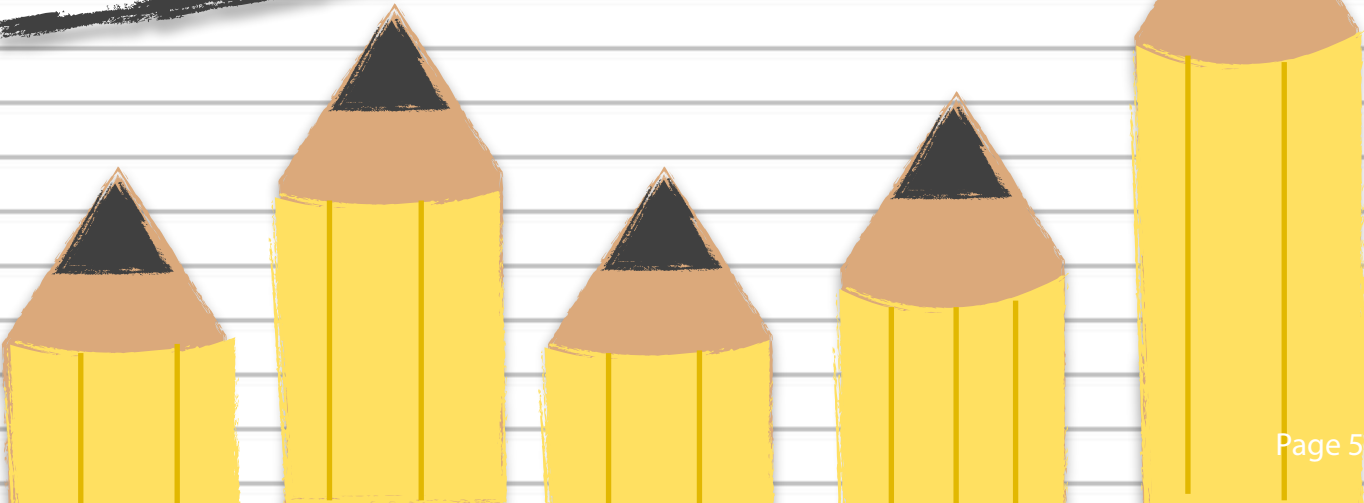
A GUIDE TO HIGHER EDUCATION



## Personal statements?

When applying for college, most colleges require the submission of at least 1 personal statement. A personal statement should always include a reflection on who **YOU** are as a person, and the experiences **YOU** have had. The personal statement is one of the many factors that colleges take into consideration when reviewing applications, so be sure to "sell yourself," and inform them of why you are the best applicant!

**5 SHARP Tips for your  
Personal Statements!**





1

**Find out how many essays are required** - Some private schools require additional supplementary writing along with the mandatory essay found on the Common App. Luckily, those universities tend to have similar additional supplementary writing so feel free to edit and revise an essay you wrote for one school to fit the requirements for another!



2

**Tell a story** - Don't be afraid to think outside the box when it comes to personal statements! Admissions officers would love to hear a story about a time in your life that has developed you into the person that you are today.

3

**Be concise and follow the directions** - Be aware of any word limits. Don't bore the admission officer with every single detail; be concise and get to the point. Some essays may not have a word limit but remember to not stray off the topic. A good essay should just have enough detail to spark interest in the reader without it being several pages long.

4

**A good personal statement can help weak test scores or GPA-** Not the best test taker? Don't stress too much! Admissions officers know that you're more than a bunch of numbers. Use the personal statement to your advantage and sell yourself. Universities want to get to know you so a strong essay can definitely boost your chances of getting accepted.

5

**BEE yourself** - Don't exaggerate on your essay, most admissions officers can see right through it. Schools aren't looking for the perfect, straight A, varsity athlete. Admitted students come from diverse backgrounds so don't be afraid to showcase who you are.





## What's new on the **CYBERKEY?**

### COLLEGE INFORMATION CENTER EDITION



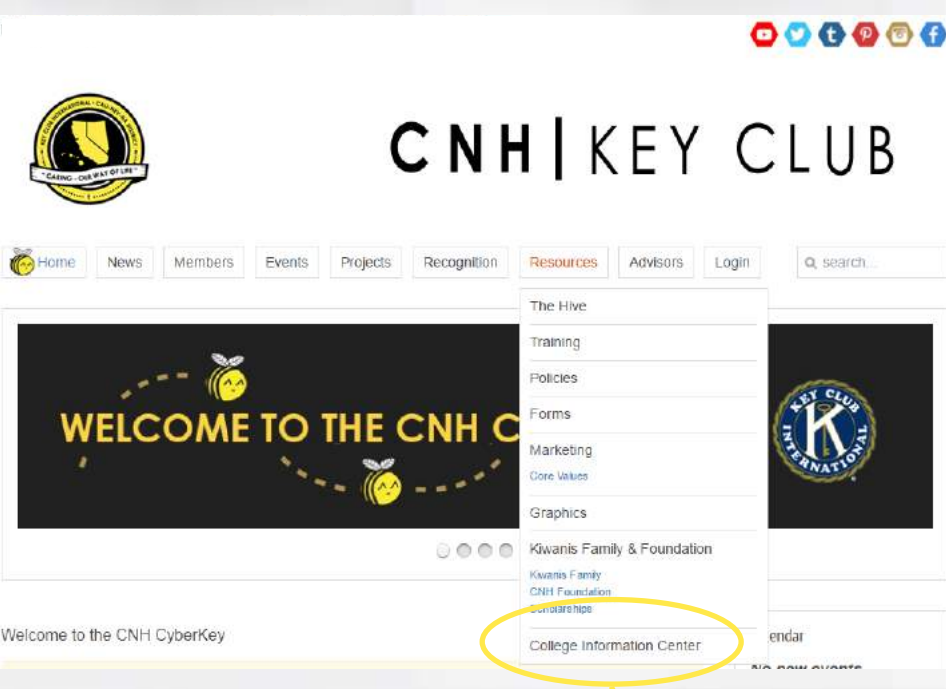
# NEED COLLEGE HELP?

## College Information Center

noun

1. a page meant to inform members on college-related material and information. A place to find a variety of college resources.

"look below to discover what resources are available and how to access the **college information center.**"



## College Information Center

### WHAT IS THE COLLEGE INFORMATION CENTER?

The purpose of this page is to inform members on college related material and information. Here you will find various resources ranging from various college topics, which will include College Readiness, Scholarships, and many more. You will also find other resources, guides, as well as monthly publications.

### PUBLICATIONS

2016

July Update| Volume 1, Issue 2

June Update| Volume 1, Issue 1



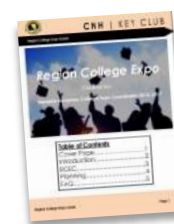
### GUIDES

Region College Expo Guide

### COLLEGE TOPIC PRESENTATIONS

Preparing For Standardized Testing

Finding the Right College for You





## BEEing a Leader without Titles

### Lead by Example

BEE a leader by LEADing a friend of yours to a Key Club meeting. Influence **their** attitudes by making sure yours is always positive and welcoming! BEE understanding and open to different **ideas!**



### Take Initiative

Little things such as advertising for your club or inviting a friend to an event demonstrates a drive that is exhibited by many leaders. Don't wait to be told to do something, but rather take the initiative and just do it.

### Make a Difference

By attending your local service events, you are making a BEE-utiful difference in your home, school, and community, one step at a time.

### Strength in Numbers

There are over 45,000 leaders in the CNH District. We are all CNH Bees, working together to develop our hive and family. And since there are so many of us, we are never alone --someone is always willing to help!



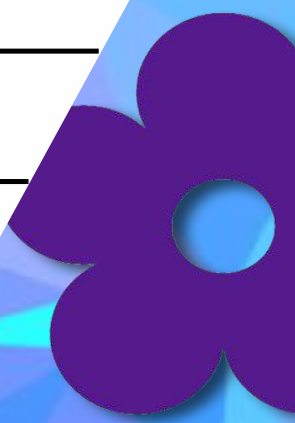
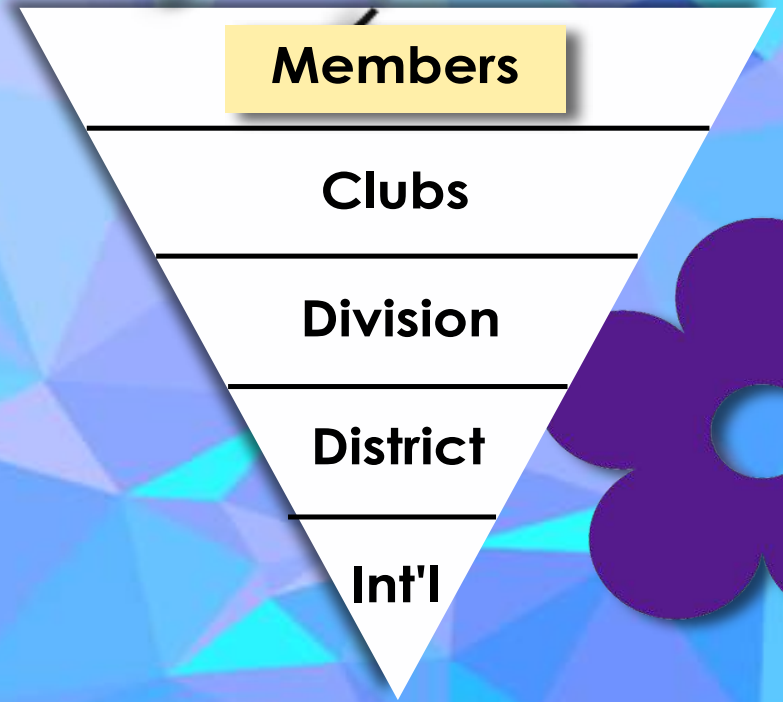


# Importance of Membership



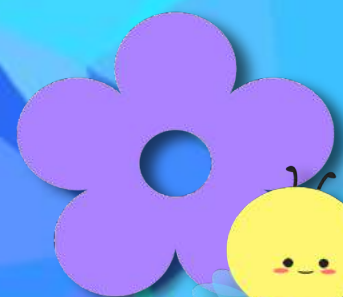
**Members are at the top of the membership pyramid because they are the most important part!**

Key Club is only able to function and exist with them. It is the dedication of the members that allows us to successfully give back to our communities and fundraise for the preferred charities. Members are also the ones who inspire the other levels of the pyramid to work even harder!



This is why effective membership recruitment is so important! If new members do not join, the membership pyramid and Key Club itself would fall apart. We would not be able to raise awareness about Pediatric Trauma or eliminate maternal neonatal tetanus.

**Without members, Key Club International wouldn't even exist!**



**3 new members beyond Retention!**



## Membership Recruitment



Increase club membership this school year by planting some important seeds of service...

**SERVICE** Community service is KEY to our mission as Cali-Nev-Ha Key Clubbers. While recruiting members, keep in mind the importance of stressing that Key Club is first and foremost a volunteer-leadership club, with spirited events like Fall Rally as fun extras. As the year progresses, maintain a dedication to community service and encourage members to retain their passion for serving their homes, schools and communities

**ENERGY** The number one most effective technique in increasing membership is to show that you personally are invested in Key Club and that you have a genuine passion for the organization. Keep a smile on your face and some spring in your step, and prospective members are sure to follow. Adding an extra “How Do You Feel?” cheer every now and then won’t hurt either!

**EDUCATE** Future Key Club members would never get the chance to experience all that our incredible Divisions have to offer if they don’t know what Key Club is in the first place; make sure to explain what the core values and practices of Key Club are, as well as clear up the common question of “Do you guys make keys or something?” with the proper response: “No we do not make keys. Rather, we open the doors to your future.”

**DIRECTION** As the school year begins, work to ensure that the entire club board is aware of the goals for the year. Always work to improve the experience of the members you serve and keep in mind the end goal, whether it may be increasing membership, service hours, division participation, etc.

# Are you attending.... DISTRICT CONVENTION 2017?

April 7-9th, 2016

2 items to effectively plan for your  
best District Convention experience

HOW TO FUNDRAISE FOR DCON?

REGISTRATION DATES, PRICES  
& PROCESS TIPS



Thank you to Emily Nguyen, D26N  
for creating the 16-17 theme design!



# Fundraising Ideas:

## SPORTS TOURNAMENT

- Ask your school to use the gym or field one day after school or the weekend.
- Have equipment provided by the school/members.
- Charge for registration.
- Have different pools of team competing for a prize.

## DANCE AWAKE-A-THON

- Have people sign up to participate
- Have club board ask for local sponsorships
- Be sure to book venue and schedule for event
- Set a time frame of event



## HOLIDAY GIFT WRAPPING

- Set up a booth at one of your school or community holiday events.
- Have members bring in a variety of gift-wrapping paper

## FOOD FAIRES

- Organize with local vendors about supplies and materials.
- Ask for donations for the food that you are providing

Remember to reach out to your Faculty AND Kiwanis Advisors to coordinate and follow food safety and money handling protocol!



# Registration Dates, Prices & process tips

## REGISTRATION DATES AND PRICES:

REGISTRATION OPENS: DECEMBER 1ST, 2016

ON-TIME REGISTRATION:  
\$196 PER PERSON

Must be received by February 22nd, 2017

LATE & FINAL REGISTRATION:  
\$236 PER PERSON

Must be received by March 13th, 2017

## PROCESS TIPS:

Follow these tips for a successful planning!

1. School Permissions & Paperwork
2. Plan DCON Budget & Fundraise
3. Recruit Chaperones
4. Plan & Verify Transportation
5. Use Resources!



Stay tuned for more updates on the CNH Cyberkey

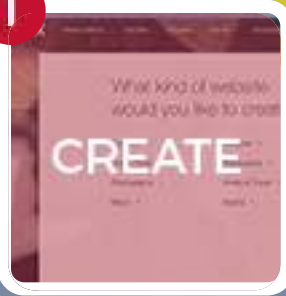
# CYBERCORNER

10



Submit a link to Divisions

1



Make a Website

2



Choose a builder

9

- ADD POLLS
- ADD CONTESTS
- USE THEMES
- ADD or USE CALENDARS

Make It Interactive

8

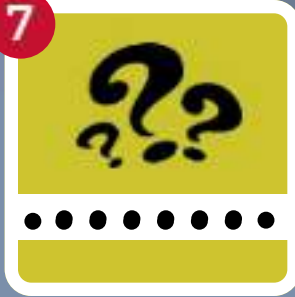
2 to 3 times a week

Update Frequently

Tip: Follow the CNH Graphic Standards Guide

Graphics > Resources

7



Locate passwords

6



Maintain a Website

5



BEE Creative!

3

- ABOUT
- RESOURCES
- CONTACT
- MEMBERS
- RECOGNITION

Create Useful Tabs

4



Add links to social

Tip: Visit/Link the CNH CyberKey and Social Media

**WEBSITE WISDOM**

*Create or Maintain a Club Division Website*

# Region Training Conference

## *Planting the Seeds of Service*

Great opportunity for Key Clubbers throughout the District to come together for bonding, fun, education and training, while building lasting Key Club friendships. Region Training Conference is where you can do all this and more! Find your date and location below.

FUN EDUCATION FRIENDSHIPS TRAINING BONDING FUN



## CAMP LOCH LEVEN

October 7-9, 2016

Want to experience a spectacular weekend that will unlock your potential to exceed above and BEEyond? Go to KeyLeader!

KeyLeader is a leadership camp which focuses on the five principles of service leadership-- personal integrity, personal growth, respect, community building, and the pursuit of excellence. This program aims to help students (**ages 14-18**) ignite the spark to become their personal best.

Throughout the 3-day weekend, attendees take part in leadership exercises, learn how to be a servant leader, and acquire important skills to apply in their everyday actions. From writing grams to balancing on a teeter-totter, each day is jammed pack with activities. Making lifelong friendships, attendees take home unique memories that lasts a lifetime.

*Take a risk and spark into a KeyLeader!*



### Other Upcoming Camp Events

**Camp Cedar Glen, Julian, CA**  
(October 21-23, 2016)

**Camp Jones Gulch, La Honda, CA**  
(November 18-20, 2016)



### Lead Facilitator: Jane Erickson

The Lead Facilitator for Camp Loch Leven is Jane Erickson! Jane is serving as the incoming 2016-17 Kiwanis International President and she is very excited to attend KeyLeader in the CNH District. She is known for her *wit, warmth, and humor* as well as her love to help others grow into stronger leaders. Working with several different groups of all ages to organizations from around the world, she has inspired many to leave their positive handprints on the world.



What are the five principles of service leadership?



## PERSONAL GROWTH

Continually developing and building yourself

## RESPECT

Showing consideration for self, others, and property

## PERSONAL INTEGRITY

Being true to oneself and doing the right thing

## FIVE PRINCIPLES OF SERVICE LEADERSHIP

## COMMUNITY BUILDING

Developing relationships to achieve positive goals

## PURSUIT OF EXCELLENCE

Striving to better your personal best



Learn more about service leadership at KeyLeader!



# REGISTRATION

## How much does it cost to attend?

3 Types of Registration:

Student Participant, **\$250**

- Key Club Member, **\$225**

Student Facilitator, **\$175**

Adult/Chaperone, **\$115**

## Can I receive a special discount?

Yes! You qualify to receive a **\$25** scholarship from Kiwanis International (*attending as a participant*). As well, use these **\$35** discount codes to receive a reduced price while registering:

**CNHKC1617**

**CNHF1617**

## Need help on registering? Follow these steps below!



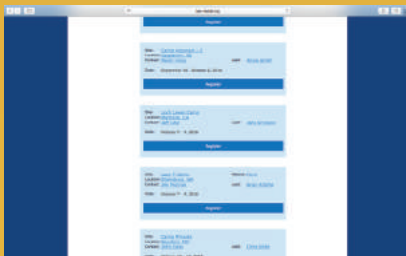
### STEP 1

Navigate to [www.key-leader.org](http://www.key-leader.org) and click on "Register"



### STEP 2

Select "Date" under the Filter By tab and click on it!



### STEP 3

Choose your desired camp event and click on Register!



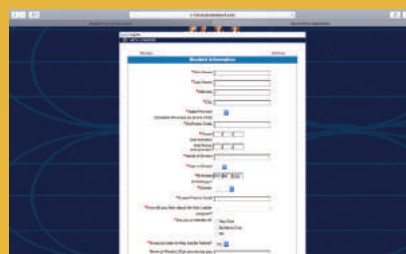
### STEP 4

Choose your type of registration and click on Register!



### STEP 5

*First-time user?* Click on New User and create your account!  
*Returning user?* Log into your account!



### STEP 6

Fill out required information and, confirm payment! Pack and prepare for KeyLeader!

**QUESTIONS? COMMENTS? CONCERNS?**

Contact the District KeyLeader Coordinator, Brittany Lam at [cnhkc.keyleader@gmail.com](mailto:cnhkc.keyleader@gmail.com)

# Member of the Year

Are you a dedicated member?

- ◆ must have a minimum of 50 service hours
- ◆ applicant cannot be an elected officer
- ◆ must submit an e-portfolio
- ◆ e-portfolio cannot exceed 54 pages or 10MB

recognizes outstanding individuals

multiple members are awarded at District Convention

- ◆ **Deadline is set by your Division Lieutenant Governor** ◆

*Do YOU Want to be Recognized?*

More information and resources can be found on  
the recognition tab at [www.cnhkeyclub.org](http://www.cnhkeyclub.org)

## Sandy Ninger Award

Have you gone beyond the calling of a member?

- ◆ The award was created to recognize individuals in terms of their own abilities and weaknesses.
- ◆ In 1934, Sandy Ninger got involved and made a difference in his school and community through hardwork.
- ◆ must submit an e-portfolio
  - ◆ e-portfolio cannot exceed 54 pages or 10MB

- ◆ there is only **one** winner each year

- ◆ must have made a contribution to the district

- ◆ **Deadline: Wednesday, February 22nd, 2017 to**  
**[cnh.kccontests@gmail.com](mailto:cnh.kccontests@gmail.com)** ◆



# This Months Exceling “Planters of Service”

Member  
of the  
Month:  
Charter  
Oak Key  
Club

## Alyssa McClain

While some members usually sit out or take a break from a service project, I always see Alyssa doing work non-stop. When she has finished her task, she always asks if there's anything else that she can do with the time left. Though she was a little shy when I first saw her at DCMs and other Division events, she has now branched out, and is beginning to reach out to other members within the Division outside her home Club. I am always amazed to see how much work she accomplishes within a mere 2-3 hours of service, and proud of her growth as an individual. She is very reliable, and carries a lot of potential. I would not be surprised to discover her election as a Club Officer or DLT member next term.

## Mahmood Bashir

Advisor of  
the  
Month:  
Division  
35 Kiwanis



Mahmood Bashir never fails to put a smile on my face. Always holding a cup of Starbucks coffee, he's always physically and mentally there for Division 35 East. I had just got off the phone with him about the Division Carnival that I'll be hosting this weekend, and he updated me on the progress of getting the park permit settled. Though I've made a countless mistakes already throughout my term and even before my term when I knew him, he still encourages and motivates me to work harder and learn, even during my most down moments. This does not only apply to me, but everyone else in Division 35 East. He is a charismatic, approachable adult who can take a few jokes here and there. I regard him as not my mentor or advisor, but as my friend who I can rely upon and who can lift me up when I need it. He was recently awarded a Distinguished Lt. Governor award at Kiwanis Convention this past weekend, and I couldn't be more proud of him and all that he has done for Key Club and Kiwins. He really is a hero to me and the rest of the community I serve.

## Valerie Manzano

Officer of  
the  
Month:  
Division  
35 West



Valerie Manzano, Even with Valerie just being a historian, she always puts the utmost effort into attending events. She always wants to do service and even attends other clubs events! Everything she does is her and I'm glad to have her in Division 35 West.

# Creating and Revising Club Policy and Bylaws

## WHEN REVISING POLICY AND BYLAWS, REMEMBER TO . . .

**STEP 1:**  
Set up a club board meeting with an advisor to discuss club policy and bylaws



**STEP 2:**  
Check with your school and district policy regarding creating club Policies and Bylaws



**STEP 3:**  
Refer to the CNH District Bylaws and Policy Manual (can be found on the CNH Cyber Key)



**STEP 4:**  
As a team, utilize school breaks and summer time when there is more free time to create/revise club Bylaws and Policies



**STEP 5:**  
Keep scheduling board meetings to make sure everyone is on the same page



**STEP 6:**  
Help each other because we are better together



Make sure to edit with a different color, still keeping the original document

Gain approval of the revisions through Kiwanis Advisor, faculty advisor, and fellow club officers before making final draft

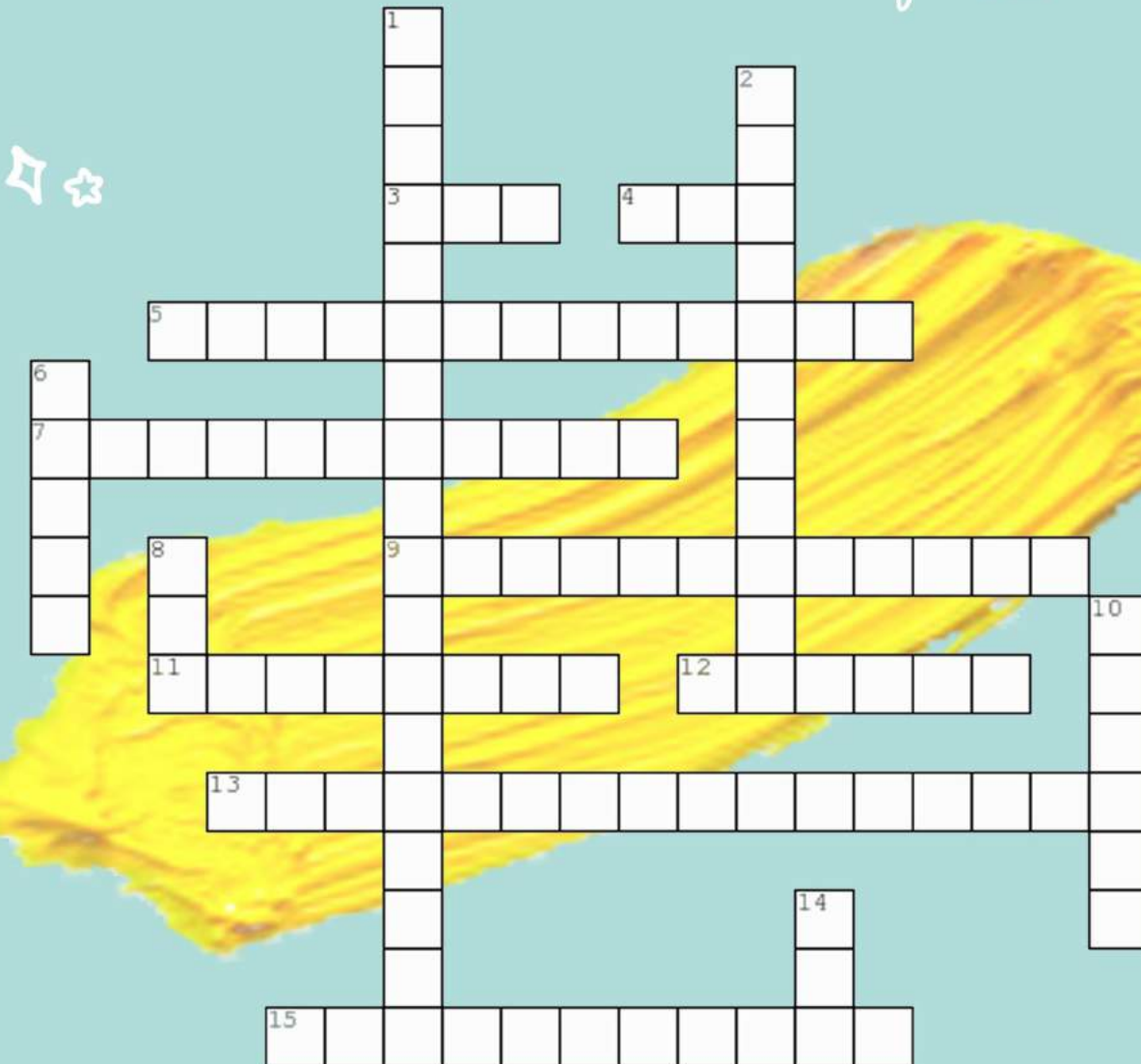
Only recognize revised policy and bylaws once approved

**Questions? Comments?  
Concerns?**

PLEASE CONTACT POLICY, INTERNATIONAL BUSINESS AND ELECTIONS CHAIR SEHYEON PARK AT [CNHKC.PIE@GMAIL.COM](mailto:CNHKC.PIE@GMAIL.COM)

# CREATING & REVISING CLUB POLICIES + BYLAWS

*a crossword puzzle!*



## Across

3. The required ratio of members to advisors behind the wheel
4. The required ratio of members to chaperones for overnight functions
5. CNH Key Club's 2016-2017 International Trustee
7. Policy section 106
9. CNH Key Club's 2016-2017 Policy, International Business, and Elections Chair
11. The name of the online resource members may use to find information, forms, and other useful links
12. How the guidelines are carried out
13. The city in which the CNH Policy Manual was last approved (2012)
15. The official name for the procedure of impeachment and dismissal

## Down

1. Section in the policy manual where you can find information about the different levels of Key Club, like division or region
2. Location (city) of 2017 Key Club International Convention
6. The day of the month that Club Monthly Report Forms are due from secretaries to their Lt. Governor
8. Abbreviated form of Region Training Conference
10. The guidelines by which the district is run
14. Can a member request to change the CNH District Policy Manual?

### TIP: Utilize the CNH District Policy Manual!

Cyberkey>Resoures>Training>Manuals>Policy Manual  
 13: RANCHOUCAMONGA, 14: YES, 15: DUESPROCESS  
 13: RANCHOUCAMONGA, 14: YES, 15: DUESPROCESS  
 SEHYEONPARK 10: BYLAWS, 11: CYBERKEY, 12: POLICY,  
 5: WILLIAMZHANG, 6: FIFTH, 7: INVOCATIONS, 8: RTC, 9:  
 1: DISTRICTSTRUCTURE, 2: SANANTONIO, 3: TWO, 4: TEN,

Answer Key:

# International Convention Proposed Amendments

## Amendment I: *Passed*

All pronouns throughout the Key Club International Bylaws that refer to specific genders (e.g. he, she, him, her, his, hers, etc.) have been changed to gender-neutral pronouns (e.g. they, their, theirs, etc.) to eliminate gender reference.



## Amendment II: *Rescinded*

Section 9 was proposed.  
*Section 9:* A school or community based organization may not sponsor more than one Key Club.

## Amendment III: *Rescinded*

Key Club members must be enrolled in high school. Members cannot be in more than one Key Club. Members should be interested in service and scholastically qualified by their school District for extracurriculars and good character. One cannot be denied membership based on previous service experience.

## Amendment IV: *Defeated*

Key Club Districts should correspond with Kiwanis International Districts and be divided into Divisions approved by the sponsoring Kiwanis District. Two Key Club districts borders cannot overlap in any way. If you would like to change the Key Club International District structure, it must be approved by the Key Club International Board before being reviewed by the Kiwanis Youth Program Board. Key Club Districts will be divided into Divisions, and have a Key Club Administrator appointed by the Kiwanis District. A change in the boundaries of a Kiwanis International District will automatically change the corresponding Key Club District.

# Club Policies and Bylaws

## What is the difference between a Bylaw and a Policy?

- ➔ A **Bylaw** defines the structure of the club's governance
- ➔ A **Policy** describes how to manage operations within a club.



## Why are Bylaws and Policy Important for a Successful Club?

- ✦ Policies and Bylaws form the structure and foundation of a club that is necessary for it to grow
- ✦ The club you serve will BEE professional
- ✦ No ambiguity among officers or members about club rules
- ✦ The club you serve will have no, if not very minimal, challenges among the officers and members because the Policies and Bylaws will be in writing

## How do i create Policies and Bylaws for the club I serve?

- Check with your school and district policy regarding creating club Policies and Bylaws
- Refer to the **CNH District Bylaws and Policy Manual** (can be found on the CNH Cyber Key) when writing a club Bylaws and Policy Manual
- Utilize school breaks and summer time when there is more free time to create club Bylaws and Policies





## INTERNATIONAL TRUSTEE

# William Zhang

## CONTACT INFORMATION

[williamzhang.kci@gmail.com](mailto:williamzhang.kci@gmail.com)

**Q: What's your favorite food to eat?**

A: Sushi, Poutine, Samosas

**Q: What TV shows do you watch?**

A: Suits, House of Cards, Scandal, Downtown Abbey, and Greys Anatomy. Kevin wants me to start OITNB. I also watch anime when I'm bored of TV shows.

**Q: Have you ever tried boba?**

A: In Canada, we call boba "Bubble Tea!"

**Q: What are some of your favorite hobbies?**

A: I buy a lot of books. Mostly fiction! I like to read science fictions, murder mysteries, and classic books as well!

**Q: What's your favorite color?**

A: Any nice dark blue!

**Q: What size shoe do you wear?**

A: 7.5 or 8

**Q: How often does it snow in Canada?**

A: It begins to snow around October – November. There is usually about 30cm of snow when it snows, and takes about an hour and a half to shovel all the snow.



## HEY CNH BEES!

My name is William, and I'm honored to introduce myself as the International Trustee for the West Virginia, California-Nevada-Hawaii, and Jamaica districts. I hail from the snowy Eastern Canada District, and I have served as a co-president and Lieutenant Governor. As your International Trustee, I will extend resources to you, and be your voice on the International Board. That said; please don't hesitate to reach out to me! I am so excited to serve you, and I can't wait to hear about all your amazing stories and accomplishments.

**Q: How tall are you?**

A: 5'6

**Q: Have you ever done your eyebrows?**

A: I've never done my eyebrows. I comb my eyebrows with finger and water, only when it's out of place.

**Q: What's your favorite subject?**

A: Either English, history, or biology.

**Q: Do you have any pets?**

A: I want a cat or a dog. I want a hamster too but they don't have a long life span.

# SPOTLIGHT ON SERVICE

## July Focus: Go Outdoors

### Go Outdoors | Beach Day

Since I currently serve as the Lt. Governor for both Divisions 20 and 32, I wanted to emphasize the District Spotlight on Service Program for all division events. For the month of July, I planned with the division leadership team to go to Goat Rock Beach to do a Beach Clean Up. We promoted this event in order to increase enthusiasm and interest in the project. This project has made me and others realize how much the trash at the beaches can severely impact the homes of living organisms and the water. The amount of time spent at the beach was perfect because members felt that their time was well spent.

- Fatima Aguilar

### Division 20 and 32



### Ho'oulu Aina Growing Farmers Program

Farrington High School Key Club was given the opportunity to work with Ho'oulu Aina and participate in their weekly Growing Farmers Program. Ho'oulu Aina is an organization dedicated to sustaining the connections between the health of the land and the people. During the service event, we worked with gardening tools, such as clippers and hand saws, to cut the bamboo into smaller pieces. Afterwards, they were placed in a neat and organized stack. We pushed hard to get the job done accordingly and had a great time. After all, this service will be benefiting everyone who lives in Kalihi.

- Kyle Constantino



### Farrington | Division 22H

# FUNDRAISE FOR

*fall  
rally*



Fall Rally North  
October 22nd  
Fall Rally South  
November 12th

## FALL RALLY?

FALL RALLY IS A CELEBRATION OF THE DONATIONS AND THE BIGGEST FUNDRAISER FOR THE PEDIATRIC TRAUMA PROGRAM. IT IS ANNUALLY HELD EVERY FALL AT TWO LOCATIONS (SIX FLAGS DISCOVERY KINGDOM IN VALLEJO, CA AND SIX FLAGS MAGIC MOUNTAIN IN VALENCIA, CA). KEY CLUBBERS WILL BATTLE IT OUT DURING SPIRIT BATTLES, HAVE FUN ASKING EVERYONE HOW THEY FEEL, AND BEST OF ALL SUPPORT AND FUNDRAISE IN SUPPORT OF PTP.

## DONE WITH FUNDRAISING?

### ***TITLE YOUR CHECK:***

**PAYABLE TO: CALI-NEV-HA (CNH) KEY CLUB MEMO:  
PTP DONATION, DIVISION 99 SOUTH, BEE HIGH SCHOOL**

### ***HOW TO TITLE YOUR ENVELOPE:***

**FROM: BEE HIGH SCHOOL DIVISION 99S,  
REGION 99 1234 HONEYCOMB DRIVE BEE CITY, BE,  
12345**

**TO: ATTN: BRUCE HENNINGS, KEY CLUB PTP DONATION  
CALI-NEV-HA (CNH) DISTRICT OFFICE 8360 RED OAK  
STREET #201 RANCHO CUCAMONGA, CA 91730**



**BE SURE TO  
TURN IN  
YOUR DONATIONS  
IN TIME FOR FALL  
RALLY!**

*questions, comments,  
concerns?*

**EMAIL PTP COORDINATOR  
CNH.KC.PTP@GMAIL.COM**

# EVERYTHING TO KNOW ABOUT PEDIATRIC TRAUMA PROGRAM

## PARTNER HOSPITALS



### WHAT IS PTP?

PTP, PEDIATRIC TRAUMA PROGRAM, WAS FIRST ESTABLISHED IN 1994 AFTER THE REALIZATION OF THE NEED FOR EDUCATION AND TRAINING IN PEDIATRIC TRAUMA AND INJURY PREVENTION. THEIR GOAL IS TO EDUCATE PEOPLE OF CHILDREN'S SAFETY TO DECREASE THE NUMBER OF CHILDREN WHO ARE SEVERELY INJURED OR KILLED DUE TO TRAUMATIC UNINTENTIONAL INJURIES. PTP HAS SUPPORTED THE GROWTH OF PARTNER HOSPITALS IN CITIES ALL AROUND CNH: OAKLAND, SAN DIEGO, LOMA LINDA, MADERA, HONOLULU, AND RENO. THE MONEY THAT IS RAISED GOES TO TRAIN PEDIATRIC DOCTORS AND FIRST RESPONDERS, THE PURCHASE OF PEDIATRIC MEDICAL EQUIPMENT, AND CONTINUAL DEVELOPMENT OF COMMUNITY OUTREACH. PTP IS HEAVILY SUPPORTED BY THE DONATIONS FROM THE MEMBERS OF THE KIWANIS FAMILY; MEMBERS LIKE YOU!

### HOW?

- MOVIE NIGHT  
\$1 DONATION + SNACKS
- PIE AN OFFICER  
\$1 DONATION TO PIE AN OFFICER
- HOLIDAY GRAMS  
DONATION IN EXCHANGE OF A BAG OF GOODIES
- SERVICE EVENT  
NONSLIP SOCKS + TOYS TO DONATE

### WHY FUNDRAISE?

90% OF UNINTENTIONAL INJURIES ARE ABSOLUTELY PREVENTABLE! DONATIONS DESIGNATED FOR THE PEDIATRIC TRAUMA PROGRAM ARE SPENT IN THREE MAJOR AREAS: GRANTS TO OUR PARTNER HOSPITALS; GRANTS TO KIWANIS AND SERVICE LEADERSHIP PROGRAM CLUBS; AND PTP SAFETY ITEMS WHICH ARE AVAILABLE FOR PURCHASE BY THE KIWANIS FAMILY AT A SUBSIDIZED COST.

*children. their future; our focus*



COMPILED BY THE  
KIWANIS FAMILY  
& FOUNDATION  
COMMITTEE

# PTP GRANTS



Did you know that the CNH Foundation has the ability to assist their Service Leadership Programs? Each project is eligible for for a grant up to \$250.

## what next?

### BRAINSTORM AND PLAN



THE DETAILS FOR THE DESIRED PROJECT. BE SURE TO CREATE A BUDGET TO STAY ON TOP OF SPENDING //MAKE A LIST OF ALL THE NECESSARY MATERIALS //CREATE A TIMELINE OF PROJECTED DATES FOR THE EVENT

### FILL OUT APPLICATION



GO TO [CNHFOUNDATION.ORG](http://CNHFOUNDATION.ORG) ►



WHAT WE DO ►  
GRANTMAKING AWARDS ►  
PTP GRANTS



ADDRESSES & IS IN RELATION TO PEDIATRIC TRAUMA



IS **NEW** TO THE CLUB YOU SERVE



IS **NOT** A FUNDRAISER

IF YOU ARE ABLE TO CHECK EVERYTHING OFF, THEN THE CNH DISTRICT STRONGLY ENCOURAGES YOUR CLUB TO APPLY FOR A PTP GRANT!

### SUBMIT

TO: KIWANIS CAL-NEV-HA FOUNDATION,  
C/O KRISTIN VOLK  
8360 RED OAK STREET, SUITE 201  
RANCHO CUCAMONGA, CA 91730



ANY ADDITIONAL INFO CAN BE FAXED TO (909) 989-7779 OR EMAILED TO [FOUNDATION@CNHKIWANIS.ORG](mailto:FOUNDATION@CNHKIWANIS.ORG)

*Questions, comments, concerns*

EMAIL PTP COORDINATOR  
[CNHKC.PTP@GMAIL.COM](mailto:CNHKC.PTP@GMAIL.COM)

*CINDY DUONG*



COMPILED BY KFF COMMITTEE

# REGION 16



**Juan Carlos Arguelo**

## DIVISION 7 NORTH

Hi fellow Key Clubbers! As you all know, the school year is about to start. Many of us are excited to see the people we haven't seen all summer. This may be upsetting for some, but it doesn't have to be. Let's make the most of it. My goal is to study hard and set up a time every day to work on Key Club matters. I hope everybody's school year starts off well.



**David Thong**

## DIVISION 7 SOUTH

What's Buzzing CNH Busy Bees? With school back into action, we can have a lot to do! Please use this school year to plan and prioritize so you can efficiently get your work done on time and efficiently. Remember to keep up with Key Club, attend service events, and try to recruit new members do this year can be one to remember!



**QuynhAnh Dam**

## DISTRICT DCON CHAIR

Salutations CNH Bees! I swear summer break was just a few weeks ago but who knew that time flies by so fast and we're already BACK-TO-SCHOOL! As you get back on track with your studies, you may feel it going by slow but before you know it, summer will be back again soon.



**Marisa Wong**

## DIVISION 44 NORTH

Hello CNH Bees! I hope you are all having a successful start to the school year and are continuing to serve the community! Don't forget to start off the year right by paying your membership dues and attending Key Club events! Key Club provides many opportunities to give back, meet new people, and learn more about your passions.



**Peyton Dunn-Finch**

## DIVISION 44 SOUTH

Hello CNH! School has began, Key Club continues and the majority of us may feel overwhelmed, but we have to push through another school year and make this a year of success! Bring friends to Key Club meetings and events and give them the chance to experience new opportunities like never before!



**Settyeon Park**

## DISTRICT P.I.E. CHAIR

Greetings CNH! As we are getting used to our school schedule, I hope that you are continuously serving your home, school, and community! What better ways to celebrate a fresh new school year? Join Key Club, attend meetings, and bring your friends to Division/Region event!



**Sarah Ahmed**

## DIVISION 27 NORTH

Welcome back to school, CNH! Has your sleep schedule evened out yet? As you tackle the new school year, take a load off by joining Key Club! You'll experience service and leadership like never before - what looks like hard work feels like a good time with friends.



**Dalena Ngo**

## DIVISION 27 SOUTH

Salutations CNH Bees! It's that time again; Back to School! I hope everyone has had a wonderful summer vacation filled with not only fun but with service as well! As it is back to school time I would like to remind you that this is the perfect time for us all to recruit new members into our home clubs.



**Emily Chen**

## REGION 16 CEC

I know school isn't something everyone wakes up to with a smile on their face but start off with a positive attitude and keep that attitude throughout the year! It's helpful to your friends and teachers. Also, you'll be more efficient and the year will seem to fly by. Plus, positivism will also help with getting all your work done and by the end of the day

Come join Region 9 at

Region 9

&  
Region 17

# ANIMATORS OF SERVICE Region Training Conference

WHEN: SATURDAY, OCTOBER 1ST - SUNDAY, OCTOBER 2ND, 2016

WHERE: YMCA CAMP JONES GULCH, LA HONDA

WHY: JOIN HUNDREDS OF KEY CLUBBERS FOR A WEEKEND FILLED  
WITH EDUCATIONAL WORKSHOPS AND AN UNFORGETTABLE CAMPFIRE.



# Division Recognition

Division	Club	Member	Officer	Faculty Advisor	Kiwanis Advisor
2	Albany	Ella Xu	An Huynh	N/A	Jack Rosano Albany El Cerrito
3 North	La Canada	Eduardo Torres <b>La Canada</b>	Michaela Baltazar <b>Verdugo Hills</b>	Kevin Henry <b>Verdugo Hills</b>	Bob Peterson <b>Crescenta Valley</b>
3 South	Eagle Rock	Delvin Nurdin <b>John Marshall</b>	Amira Chowdhury <b>Herbert Hoover</b>	Susan Jekarl <b>Herbert Hoover</b>	Susan Jekarl <b>Herbert Hoover</b>
4 East	Orange	Tracey Muy Luna <b>Foothill</b>	Lillian Nguyen <b>Villa Park</b>	N/A	N/A
4 North	La Quinta	Bao-Van Le <b>Bolsa Grande</b>	Emmanuel Estrada <b>Santa Ana Valley</b>	Andrew Wolf	Katie Victornia <b>Santiago</b>
4 West					
5 North	Clovis West	Lezly Cota-Rivas	Hannah Pham	Eric Outfleet	Debbie Young
5 South					
6 North	John W. North	Trang Han	Tyler Ma	Chuong Vu	Debra McNay
6 South	Temecula Valley	Joselle Anne Angeles	Zurisadai Inzunza	Kathy Dao	Carolyn Qualm
7 North	Hiram Johnson	Angel Dawson	Dave Garcia	John Brummer	John Brummer
7 South	Cosumnes Oaks	Brandon Duong <b>Elk Grove</b>	Wasana Vang <b>Valley</b>	Gary Greenbaum <b>Laguna Creek</b>	Anthony Bronwyn <b>Pleasant Grove</b>
8	American Canyon	Carson Chan	Fermin Bautista <b>American Canyon</b>	Elizabeth Ruvalcaba <b>Vanden</b>	Emma Bosse <b>Fairfield</b>
10 North	Marshall Fundamental	Allison Ang-Ye <b>San Marino</b>	Maya Rosental <b>Saporito Marshall</b>	Gloria Tu <b>Stern MASS</b>	Ernest Arnold <b>Stern MASS</b>
10 South	Alhambra	Jacky Ou <b>Rosemead</b>	Edward Tran <b>Gabrielino</b>	Tiffany Kang <b>Schurr</b>	Carol Mahoney <b>Rosemead</b>
11					
12 East	Independence	Claire Phan <b>Piedmont Hills</b>	Ziyuan Lei <b>Milpitas</b>	N/A	Marilyn Diamond <b>Piedmont Hills</b>
12 South	Yerba Buena	Alice Leung <b>Ann Sobrato</b>	Thien Nguyen <b>Yerba Buena</b>	N/A	Robin Hagan <b>Willow Glen</b>
12 West	Westmont	Jenny Lei <b>Prospect</b>	Justin Le <b>Lincoln</b>	None	None
13 North	Downey	Hubert Henson <b>Lakewood</b>	Gina Maglanoc <b>Lakewood</b>	Mr. Mattison <b>Cerritos</b>	Frank Jimenez <b>Downey</b>
13 South	Mayfair	Alyssa Guevara	Erina Lara	Ms. Aguilera	Manuel Campos
13 West	Alexander Hamilton	Jason Li, Lincoln	Liliana Wilf, Hamilton	Reina Pastor, Lincoln	Melvin Merrick
14					



# Division Recognition

Division	Club	Member	Officer	Faculty Advisor	Kiwanis Advisor
15	Upland	Michelle Ho <b>Ruben Ayala</b>	Jessica Ortega <b>Rancho Cucamonga</b>	Jaime Dinh <b>Ruben Ayala</b>	Darleen Nelson <b>Rancho Cucamonga</b>
16 East	Birmingham Charter	Nicole Ortega <b>Valley Academy Arts &amp; Sciences</b>	Kelly Agiya <b>Birmingham Charter</b>	Michael Gross <b>Northridge Academy Key Club</b>	Jim Lofadol <b>Kennedy Key Club</b>
16 West					
16 North	Valencia	Isaac Ustoa <b>Golden Valley</b>	Nate Kim <b>Golden Valley</b>	Scott Cooper <b>Arleta</b>	Reverend Bob <b>Golden Valley</b>
16 South	Burbank	Carmina Capalad <b>Providence</b>	Nadia Hajar <b>Panorama</b>	Joe Sciuto <b>Providence</b>	Robert Archer <b>Bellarmine-Jefferson</b>
18 East	Woodlake	Fidel Moreno <b>Golden West</b>	Kenya Ochoa <b>Redwood</b>	Carmita Pena <b>Woodlake</b>	Richard Hineman
18 West	Dinuba	n/a	n/a	n/a	Salvador vieyra
19 North	Gardena	Sarah Hoang <b>Lawndale</b>	Reggie Hughes <b>CAMS</b>	Janet Lewis <b>CAMS</b>	John Nichelson <b>Gardena</b>
19 South					
20/32	Cloverdale High School	Steven Bucher <b>Cardinal Newman</b>	Brandon Alvarado <b>Montgomery</b>	Joan Mingori <b>Lower Lake</b>	Rich Fuller <b>Windsor</b>
21	Mira Mesa	Vivian Huynh <b>Herbert Hoover</b>	Cecilia Hoang <b>Patrick Henry</b>	Valerie Crawford <b>Patrick Henry</b>	Donald Smith <b>James Madison &amp; Clairemont</b>
22 Hikina	Roosevelt	Dani St. Arnault <b>Kaiser</b>	Allysha Mateo <b>Maryknoll</b>	Mrs. Itagaki <b>Puanhou</b>	Mrs. Au <b>Iolani</b>
22 Komohana					
22 Makai	Baldwin	Bradon Miyake <b>Waiakea</b>	Rachel Nagamine <b>Maui</b>	Kari Sato <b>Waiakea</b>	Tyler Navarro <b>Kiwanis Club of Kauai</b>
23	Edward C. Reed	Irene Mena <b>Damonte Ranch</b>	Hannah Quick <b>Earl Wooster</b>	Patricia Lucas <b>Reno</b>	Eunice Hylin <b>Earl Wooster</b>
24	Atascadero	Emma John <b>Atascadero</b>	Lily Larkin <b>San Luis</b>	Jennifer Bravo <b>Atascadero</b>	Brent Wingett <b>Atascadero</b>
26 North	Clayton Valley	Victoria La	Lily Yau	Mark Tobin	Kay Power
26 South	Amador Valley	Dominick Sui <b>Monte Vista</b>	Diana Ruiz <b>Acalanes</b>	Ashley Sheaff <b>Dublin</b>	Cindy Gin <b>Dublin</b>
27 North	Middle College	Bea Saptang <b>SECA</b>	Jasmine Louie <b>SECA</b>	Elaine Thompson <b>Middle College</b>	Joseph Trinh <b>Ronald E. McNair</b>
27 South	Tracy Jt. Union	Alicia Lujan	Jaiden Singh	Katy Knight	Rhodesia Ransom
28 North	Legacy High School	Ashley Martinez <b>Canyon Springs</b>	Mathew Salcedo <b>Shadow Ridge</b>	Mrs. Frye <b>East CTA</b>	Mr. Greubel
28 South	Valley	Ivan Chang <b>Coronado</b>	Khadija Rashidally <b>Valley</b>	Hazel Osio <b>CASLV</b>	Jennifer Forrester

# Division Recognition

Division	Club	Member	Officer	Faculty Advisor	Kiwanis Advisor
28 West	Palo Verde	Matthew Wong	Megan Nguyen	Ms. Bowen	Hanna Santee
29	Santa Maria High School	Alexis Salgado	Maya DeLaTorre	Osvaldo Soletto	Jim Major
30 North	Buena Park	Austen Grashbaugh <b>La Habra</b>	Breanne Carey <b>Brea Olinda</b>	Mike Winter <b>Whittier Christian</b>	Stephanie Walker
30 South	Whitney	Crystal Park <b>Loara</b>	Annie Nguyen <b>Western</b>	Kellie Vosskuhler <b>Oxford</b>	Lamont Miya <b>Cypress</b>
31					
33					
34 North	Aragon	Brenden Walsh <b>El Camino</b>	Dinh Poon <b>Hillsdale</b>	Matt Miskelly <b>Carlmont</b>	Gerry Weiss <b>Aragon</b>
34 South	N/A	N/A	Vivian Pham	Marc Tolentino	David Gragnola <b>Lizanne Verzic</b>
35 East	Nogales	Derian Lu <b>John A. Rowland</b>	Rejie Anne Palingayan <b>Diamond Bar</b>	Kate Luu <b>John A. Rowland</b>	Mahmood Bashi <b>Hacienda Heights</b>
35 West	Sierra Vista	Jennifer Hang <b>Sierra Vista</b>	Valerie Manzano <b>West Covina</b>	Cheri Lee <b>Arroyo</b>	Mahmood Bashir <b>Hacienda Heights</b>
36 East	Indian Springs	Vanessa Martinez <b>Pacific</b>	Yenna Chang <b>Redlands</b>	Nicole Karnes <b>Indian Springs</b>	Judy Miller
36 West					
37 East	Orange Glen	Sam Cho <b>Mission Hills</b>	Bella Ngoc-Huynh <b>Escondido</b>	Michelle Presley <b>Mission Hills</b>	Randy Ortlieb <b>Orange Glen</b>
37 North	San Dieguito	Sarah Kang <b>Sage Creek</b>	Samantha Parisi <b>San Dieguito Academy</b>	Donna Stockalper <b>Carlsbad</b>	Allen Sundstrom <b>Encinitas</b>
37 South	Mt. Carmel	Sonia Lam <b>Mt. Carmel</b>	Jaclyn Le <b>Poway</b>	Deborah Stenger <b>Mt. Carmel</b>	Richard Hankla <b>Poway</b>
38 East	Cobalt (C.I.M.S)	Jennifer Garcia <b>Victor Valley</b>	Jose Morales <b>Cobalt</b>	Jocelyn Encarnacion <b>Cobalt</b>	Wil Morgan <b>Victorville</b>
38 West	Quartz Hill	Chole Salzman <b>SOAR</b>	Sophie Hoffman <b>Sherman Burroughs</b>	Yvonne Gonzales <b>Desert Sands</b>	Ms. Nancy Speaks <b>Palmdale West</b>
39					
41 North	University	Jaclyn Liu <b>Irvine</b>	Anita Shen <b>Northwood</b>	N/A	Bob Miller
41 South	Aliso Niguel	Laila Afshari	Brian Xie	Greg Roberts	Elizabeth Smith
42 East	Westlake	Ashley Kil <b>oorpark</b>	Brandon Ly <b>Newbury Park</b>	Cristy Warner <b>Westlake</b>	Sonja Cohen <b>Santa Susana</b>

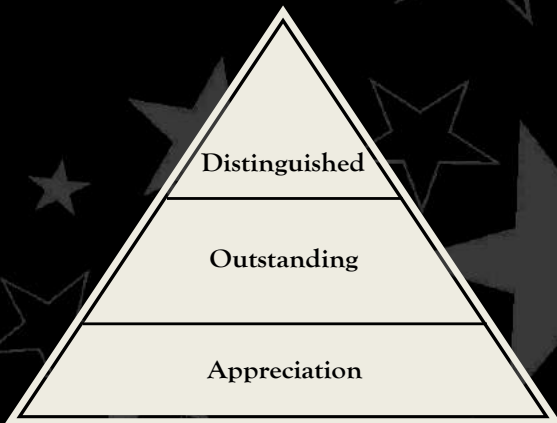
# Division Recognition

Division	Club	Member	Officer	Faculty Advisor	Kiwanis Advisor
42 West					
43	Seaside	Jeff Galvan <b>Marina</b>	Janelle Inductivo <b>Seaside</b>	Karen Lidl <b>Marina</b>	Giselle Young <b>Marina</b>
44 North	Rocklin	Chloe Baker <b>Lincoln</b>	Zachariah Jose <b>Roseville</b>	Dana Dooley <b>Roseville</b>	Lori Heitz <b>Placer</b>
44 South	Mira :oma	Baylea Chen	Madi Acalay	Mrs. Delasse	Kelli Rush
45					
46 North					
46 South					
47	Banning High School	Alexis Martinez <b>Banning</b>	Cherenna Monton <b>Hemet</b>	Wendy Hamby <b>Tahquitz</b>	Debbie Franklin <b>Banning</b>

## Officers, “Bee” Recognized for YOUR Hard Work!



### Levels of



### Recognition

### For who?

- \* Any CNH Club Level officers interested in BEEing recognized for a term well-used!
- \* Limited to: President, Vice President, Secretary, Treasurer, and News Editors.

### How?

- \* For any officers to “BEE” eligible for recognition in any capacity they must complete a checklist.
- \* This said checklist can be found on the CNH Website as well as other totally “Buzz-Worthy” awards!
- \* For more info go to: CNH > Contests > Officer.



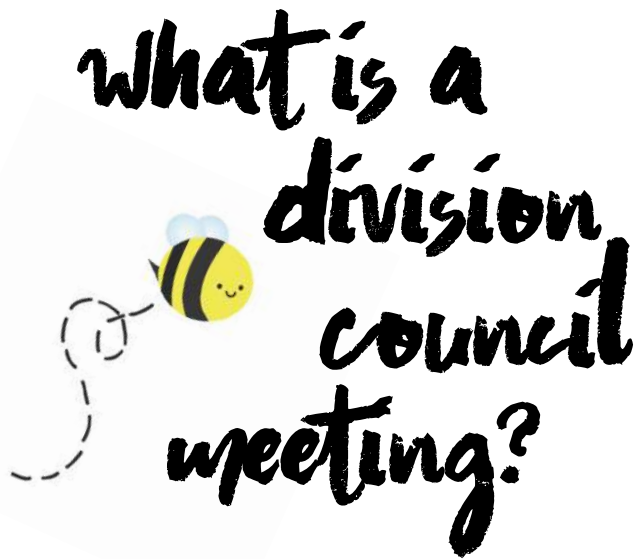
Have any questions, comments, or concerns? Contact us, we'll be more than happy to help!

Michelle Ng

Member Recognition Committee Chair

[cnhkc.mr@gmail.com](mailto:cnhkc.mr@gmail.com)

# September District Calendar



A Division Council Meeting (DCM) is a meeting conducted by the respective Lieutenant Governor for the members of his or her respective division. DCMs are full of information about upcoming events, education about Key Club, and much more. There is always something for everyone at a DCM! At DCMs, you will learn more about various projects and events, get involved with the division and its people, and gain a better understanding of how great this organization truly is. You are encouraged to attend in order to learn more about what's been happening in Key Club, and why it matters to you. Some DCMs are even combined with a service project, fundraiser, or social event so you can be there for more than one reason!

Division	Date	Time	Location	Address
2	17	10:00 am	Dimond Park	3860 Hanly Rd, Oakland, CA 94602
3 North	24	1:00 pm	La Canada High School	4463 Oak Grove Dr, La Cañada Flintridge, CA 91011
3 South	24	2:00 pm	International School of Los Angeles / Lycée International	1105 W Riverside Dr, Burbank, CA 91506
4 East	24	3:00 pm	Anaheim Angel Stadium	2000 E Gene Autry Way, Anaheim, CA 92806
4 North	17	1:00 pm	Mile Square Park	10401 Warner Ave, Fountain Valley, CA 92708
4 West				Contact Region Advisor
5 North	21	6:00 pm	Dry Creek Park	Dry Creek Park, 855 N Clovis Ave, Clovis, CA 93611
5 South	14	6:00 pm	Edison High School	540 E California Avenue, Fresno, 93722
6 North	17	2:00 pm	Harada Park	13099 65th St, Eastvale, CA 92880
6 South	17	1:00 pm	Heritage High School	26001 Briggs Rd, Romoland, CA 92585
7 North	18	9:00 am	Land Park	3901 Land Park Dr, Sacramento, CA 95822
7 South				Contact Region Advisor
8	11	1:00 pm	Laurel Creek Park	2986 Gulf Dr. Fairfield, CA, 94533
10 North	17	2:00 pm	Eaton Canyon	1750 N Altadena Dr, Altadena, CA 91001
10 South	18	1:00 pm	Almanson Park	800 S Almanson St, Alhambra, CA 91801
11				Contact Region Advisor

# September District Calendar

Division	Date	Time	Location	Address
12 East	17	10:00 am	Golfland	1199 Jacklin Rd, Milpitas, CA 95035
12 South	17	5:30pm	Greystone Park	95120Camden Ave & Mt Carmel Dr, San Jose, CA 95120
12 West				No DCM
13 North	24	11:00 am	John Anson Ford Park	8000 Park Ln Bell Gardens, CA 90202
13 South	24	12:00 pm	John Furman Park	10419 Rives Ave Downey, CA 90241
13 West	24	11:00 am	John Ahnson Ford Park	8000 Park Ln, Bell Gardens, CA 90201
14				Contact Region Advisor
15				Contact Region Advisor
16 East	17	2:00 pm	Dearborn Park	17141 Nordhoff St Northridge, CA 91325
16 West				Contact Region Advisor
16 North	24	1:00 pm	Lycee International	1105 W Riverside Dr, Burbank, CA 91506
16 South	17	1:00 pm	Johnny Carson Park	400 Bob Hope Drive, Burbank, CA, 91505
18 East	17	3:00PM	Clovis North	2770 E International Ave, Fresno, CA 93730
18 West	24	9:00 am	plaza park	visalia plaza park
19 North	24	11:00 am	La Romeria Park	19501 Inglewood Avenue Torrance, CA 90503
19 South				Contact Region Advisor
20/32	24	12:00 pm	Cardinal Newman High School	50 Ursuline Rd, Santa Rosa, CA 95403
21	17	12:00 pm	South Clairemont Park	3605 Clairemont Dr, San Diego, CA 92117
22 Hikina	18	8:00 AM	Iolani School	563 Kamoku St. Hnolulu, HI 968326
22 Komohana				Contact Region Advisor
22 Makai	18	8:00 am	Iolani Schools	563 Kamoku St, Honolulu, HI 96826
23	24	12:00 pm	University of Nevada, Reno	1664 N Virginia St, Reno, NV 89557
24	24	11:00 am	Kiwanis Hall	7848 Pismo Ave Atascadero, CA 93422
26 North	10	12:00pm	Dave Brubeck Park	4363 Concord Blvd Concord, CA 94521
26 South	17	1:00 pm	California High School	9870 Broadmoor Dr, San Ramon, CA 94583
27 North	24	12:00 pm	Pleasant Grove High School	9531 Bond Rd, Elk Grove, CA 95624
27 South	24	9:00 am	Pleasant Grove High School	9531 Bond Rd, Elk Grove, CA 95624
28 North	13	5:00 pm	Cheyenne HS	3200 W Alexander Rd, North Las Vegas, NV 89032
28 South	14	5:00 pm	Southeast Tech	5710 Mountain Vista St, Las Vegas, NV 89120
28 West	15	5:00 pm	Bonanza High School	6665 Del Rey Ave, Las Vegas, NV 89146
29	17	12:00 pm	Boomers	2250 Preisker Ln, Santa Maria CA 93458
30 North	17	5:00 pm	Buena Park High School	8833 Academy Dr, Buena Park, CA 90621
30 South	17	1:00 pm	Miles Square Park	16801 Euclid St, Fountain Valley, CA 92708

# September District Calendar

Division	Date	Time	Location	Address
<b>31</b>				Contact Region Advisor
<b>33</b>				Contact Region Advisor
<b>34 North</b>	3	1:00 pm	San Carlos Library	610 Elm Street, San Carlos, CA 94070
<b>34 South</b>	17	10:00 am	West Valley Community Services	, 10104 Vista Drive, Cupertino, 95129
<b>35 East</b>	17	4:00 pm	Creekside Park	780 Creekside Dr Walnut, CA 91789
<b>35 West</b>	17	11:00 am	Morgan Park	4100 Baldwin Park Blvd, Baldwin Park, CA 91706
<b>36 East</b>	17	12:00 pm	Beach Boardwalk	400 Beach St, Santa Cruz, CA 95060
<b>36 West</b>				Contact Region Advisor
<b>37 East</b>	17	12:00 pm	Hollandia Park	12 Mission Hills Ct, San Marcos, CA 92069
<b>37 North</b>	24	1:00 pm	Guajome Park Academy	2000 N Santa Fe Ave, Vista, CA 92083
<b>37 South</b>	17	12:00 pm	Hilltop Park	9711 Oviedo Way, San Diego, CA 92129
<b>38 East</b>	17	2:00 pm	Cobalt Institute of Maths and Science Academy	14045 Topaz Rd, Victorville, CA 92392
<b>38 West</b>	10	3:00 pm	Lt. Governor Margaret Lee's Residence	4501 West Ave N4, Palmdale, CA 93551
<b>39</b>				Contact Region Advisor
<b>41 North</b>	17	3:00 pm	Bill Barber Park	4 Civic Center Plaza Irvine, CA 92606
<b>41 South</b>	17	11:00 am	Costeau Park	Alicia Parkway and Costeau Laguna Hills, CA 92653
<b>42 East</b>	17	1:00 pm	Paradise Falls Hiking Trail	pin 928 West Avenida De Los Arboles, Wildwood Regional Park, Thousand Oaks, CA 91360
<b>42 West</b>	17	2:00 pm	Santa Paula High School	404 N 6th St, Santa Paula, CA 93060
<b>43</b>	17	12:00 pm	Beach Boardwalk	400 Beach St, Santa Cruz, CA 95060
<b>44 North</b>	24	9:00 am	Pleasant Grove High School	9531 Bond Rd, Elk Grove, CA 95624
<b>44 South</b>	27	10:30 am	pleasant grove high school	9531 Bond Rd, Elk Grove, CA 95624
<b>45</b>				Contact Region Advisor
<b>46 North</b>	12	6:00 pm	GV High	2121 E Childs Ave Merced, CA 95358
<b>46 South</b>				Contact Region Advisor
<b>47</b>	17	9:00 am	Banning High School	100 W Westward Ave Banning, CA 92220

# Contact Information



## **Leadership Team**

### **Governor**

Kevin Myron .....cnhkc.dg1617@gmail.com

### **Secretary**

Angel Lau .....cnhkc.ds1617@gmail.com

### **Treasurer**

Shahrukh Shaikh .....cnhkc.dt1617@gmail.com

### **News Editor**

Teryn Ngo .....cnhkc.dne@gmail.com

### **Technology Editor**

Deidra Dilworth .....cnhkc.dte@gmail.com

### **Communications & Marketing Chair**

Joceline Yu .....cnhkc.cm@gmail.com

### **District Convention Chair**

QuynhAnh Dam .....cnhkc.dcon@gmail.com

### **Kiwanis Family & Foundation Chair**

Johnny Chen .....cnhkc.kff@gmail.com

### **Member Relations Chair**

Minghua Ong .....cnhkc.mrs@gmail.com

### **Member Recognition Chair**

Michelle Ng .....cnhkc.mr@gmail.com

### **Policy Int'l & Elections Chair**

Sehyeon Park .....cnhkc.pie@gmail.com

### **Service Projects Chair**

Marie Hashitani .....cnhkc.sp@gmail.com

## **District Coordinators**

### **College EXPO Coordinator**

Broneka Kovarkez .....cnhkc.collegeexpo@gmail.com

### **Graphics Department Coordinator**

Gaby Yonarta .....cnhkc.gd@gmail.com

### **Key Leader Coordinator**

Brittany Lam .....cnhkc.keyleader@gmail.com

### **Pediatric Trauma Program Coordinator**

Cindy Duong .....cnhkc.ptp@gmail.com

### **Sergeant at Arms Coordinator**

May Amontos .....cnhkc.saa@gmail.com

### **Service EXPO Coordinator**

Crystal Wong .....cnhkc.serviceexpo@gmail.com

## **Administrators**

### **District Administrator**

Marek LeBlanc .....cnhkc.sa@gmail.com

### **Assistant Administrator**

Marshall Roberson .....cnhadan@gmail.com

### **Assistant Administrator**

Doug Gin .....dgin.kiwanis@gmail.com

### **Special Assistant**

Pete Ballew .....pjb184@yahoo.com

### **Service Leadership Programs Director**

Bruce Hennings .....bruce@cnhkiwanis.org

## **Region 1**

Division 11 .....d11.cnhkc.ltg@gmail.com

Division 31 .....d31.cnhkc.ltg@gmail.com

Advisor Geoff Tobias .....region1advisor@gmail.com

## **Region 2**

Division 21 .....d21.cnhkc.ltg@gmail.com

Division 37 East .....d37e.cnhkc.ltg@gmail.com

Division 37 North .....d37n.cnhkc.ltg@gmail.com

Division 37 South .....d37s.cnhkc.ltg@gmail.com

Advisor Timothy Cunning .....cunningtim@cs.com

## **Region 3**

Division 4 East .....d04e.cnhkc.ltg@gmail.com

Division 4 North .....d04n.cnhkc.ltg@gmail.com

Division 4 West .....d04w.cnhkc.ltg@gmail.com

Division 30 North .....d30n.cnhkc.ltg@gmail.com

Division 30 South .....d30s.cnhkc.ltg@gmail.com

Division 41 North .....d41n.cnhkc.ltg@gmail.com

Division 41 South .....d41s.cnhkc.ltg@gmail.com

Advisor Frank Barry .....fbarry642@gmail.com

Advisor Elaine Pong .....epong119@aol.com

## **Region 4**

Division 6 North .....d06n.cnhkc.ltg@gmail.com

Division 6 South .....d06s.cnhkc.ltg@gmail.com

Division 36 East .....d36e.cnhkc.ltg@gmail.com

Division 36 West .....d36w.cnhkc.ltg@gmail.com

Division 47 .....d47.cnhkc.ltg@gmail.com

Advisor Carolyn Qualm .....r04.advisor@gmail.com

## **Region 5**

Division 28 North .....d28n.cnhkc.ltg@gmail.com

Division 28 South .....d28s.cnhkc.ltg@gmail.com

Division 28 West .....d28w.cnhkc.ltg@gmail.com

Division 38 East .....d38e.cnhkc.ltg@gmail.com

Division 38 West .....d38w.cnhkc.ltg@gmail.com

Advisor Richard Olmstead .....spyder4@antelecom.net

Advisor Hanna Santee .....hlsantee@gmail.com

# Contact Information

## Region 6

Division 23.....d23.cnhkc.ltg@gmail.com  
Division 45.....d45.cnhkc.ltg@gmail.com  
Advisor Michael McStroul..... mmcstroul@gmail.com

## Region 7

Division 3 North .....d03n.cnhkc.ltg@gmail.com  
Division 3 Southv ..... d03s.cnhkc.ltg@gmail.com  
Division 16 North .....d16n.cnhkc.ltg@gmail.com  
Division 16 South.....d16s.cnhkc.ltg@gmail.com  
Division 16 East..... d16e.cnhkc.ltg@gmail.com  
Division 16 West .....d16w.cnhkc.ltg@gmail.com  
Advisor Doug Ridnor .....dridnor@sbcglobal.net

## Region 8

Division 13.....d13w.cnhkc.ltg@gmail.com  
Division 13 North .....d13n.cnhkc.ltg@gmail.com  
Division 13 South ..... d13s.cnhkc.ltg@gmail.com  
Division 19 North .....d19n.cnhkc.ltg@gmail.com  
Division 19 South ..... d19s.cnhkc.ltg@gmail.com  
Advisor Alan Quon..... alanquan@gmail.com  
Advisor Mark Ross..... mkcrossreg11@aol.com

## Region 9

Division 2.....d02.cnhkc.ltg@gmail.com  
Division 8.....d08.cnhkc.ltg@gmail.com  
Division 26 North .....d26n.cnhkc.ltg@gmail.com  
Division 26 South ..... d26s.cnhkc.ltg@gmail.com  
Advisor Victor Chan..... victor913@gmail.com  
Advisor Lisa Devoe..... lisagrover81@gmail.com

## Region 10

Division 24.....d24cnhkc.ltg@gmail.com  
Division 29.....d29.cnhkc.ltg@gmail.com  
Division 42 East..... d42e.cnhkc.ltg@gmail.com  
Division 42 West .....d42w.cnhkc.ltg@gmail.com  
Advisor Jim Major .....simikiwanisslp@icoud.com

## Region 11

Division 18 East..... d18e.cnhkc.ltg@gmail.com  
Division 18 West .....d18w.cnhkc.ltg@gmail.com  
Division 33.....d33.cnhkc.ltg@gmail.com  
Advisor Carole Farris ..... carole.farris@gmail.com

## Region 12

Division 5 North ..... d05n.cnhkc.ltg@gmail.com  
Division 5 South .....d05s.cnhkc.ltg@gmail.com

Division 46 North ..... d46n.cnhkc.ltg@gmail.com  
Division 46 South ..... d46s.cnhkc.ltg@gmail.com  
Advisor Frank Vierra .....fvierrara12@gmail.com

## Region 13

Division 10 North ..... d10n.cnhkc.ltg@gmail.com  
Division 10 South ..... d10s.ltg.cnhkc@gmail.com  
Division 15..... d15.cnhkc.ltg@gmail.com  
Division 35 East..... d35e.cnhkc.ltg@gmail.com  
Division 35 West ..... d35w.cnhkc.ltg@gmail.com  
Advisor Patricia Cridland..... patriciacridland@aol.com

## Region 14

Division 14..... d14.cnhkc.ltg@gmail.com  
Division 39..... d39.cnhkc.ltg@gmail.com  
Advisor Rhonda Cameron .....cnh.region14.kc@gmail.com

## Region 15

Division 20/32 ..... d2032.cnhkc.ltg@gmail.com  
Advisor Sue Cummins .....cummins@sonic.net

## Region 16

Division 7 North ..... d07n.cnhkc.ltg@gmail.com  
Division 7 South ..... d07s.cnhkc.ltg@gmail.com  
Division 27 North ..... d27n.cnhkc.ltg@gmail.com  
Division 27 South ..... d27s.cnhkc.ltg@gmail.com  
Division 44 North ..... d44n.cnhkc.ltg@gmail.com  
Division 44 South ..... d44s.cnhkc.ltg@gmail.com  
Advisor Judi Horton .....jrw781@gmail.com  
Advisor Rae Whitby-Brummer ..... RaeWhitby@aol.com

## Region 17

Division 12 East..... d12e.ltg.cnhkc@gmail.com  
Division 12 South ..... d12s.cnhkc.ltg@gmail.com  
Division 12 West ..... d12w.cnhkc.ltg@gmail.com  
Division 34 Northv ..... d34n.cnhkc.ltg@gmail.com  
Division 34 South ..... d34s.cnhkc.ltg@gmail.com  
Division 43..... d43.cnhkc.ltg@gmail.com  
Advisor Jennifer Buena ..... jenbuena@gmail.com  
Advisor Jim Davis.....winfield5064@sbcglobal.net  
Advisor Jim Hart.....junkwitz@aol.com

## Region 18

Division 22 Hikina ..... d22h.cnhkc.ltg@gmail.com  
Division 22 Komohana .....d22k.cnhkc.ltg@gmail.com  
Division 22 Makai..... d22m.cnhkc.ltg@gmail.com  
Advisor Charlene Masuhara ..... chmasuhara@gmail.com



# CNH | KEY CLUB

Thank you for reading!

## The Cali-Nev-Ha District Newsletter

Questions? Contact Us!



Key Clubbers volunteer to clean up and water plants.



**Kiwanis**  
Service Leadership Programs

[cnhkeyclub.org](http://cnhkeyclub.org) | [keyclub.org](http://keyclub.org)

8360 RED OAK STREET #201 RANCHO CUCAMONGA, CA 91730 • 909-989-1500